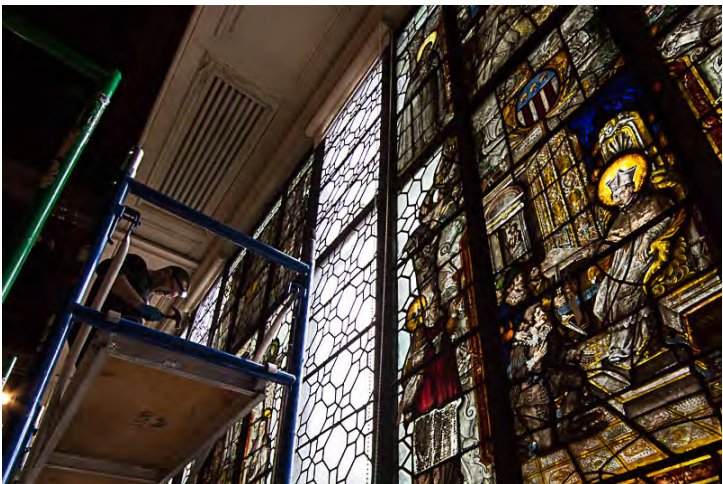


SUPPORT FOR RESEARCH & SCHOLARLY ACTIVITIES



Office of the
Vice Provost for Research

TABLE OF CONTENTS

Commonly Asked Questions

Commonly Asked Questions by New Faculty	1
---	---

About OVPR

Research Mission.....	2
OVPR Organizational Chart.....	3

Research Enhancement

Research Enhancement Unit	4
Pivot	5

Sponsored Projects Administration

Office of Sponsored Projects	6
Research Administration Pods.....	7
PI Dashboard	8
myResearch	9

Research Integrity

Research Integrity Overview	10
Human Research Protection Program	12
Office of Animal Research	14
Office of Research Safety	15
Office of Research Integrity and Compliance.....	16

Research Innovation

Office of Innovation and Entrepreneurship.....	17
Technology Commercialization Office.....	19

Additional Scholarly Support

Libraries and Academic Innovation	20
Research Technology Services	22
Communicating Research.....	23
Undergraduate Research / GW Student Research Commons	25



Commonly Asked Questions by New Faculty

I am planning a grant submission – what do I need to do to start the process?

- Notify your assigned [Research Administration Pod](#) about your intent to submit a grant as far in advance as possible. Each pod has an “intent to submit” form.

I have awarded grants that I need to transfer from another institution to GW. How do I start the process?

- Contact your assigned [Research Administration Pod](#) to start the process.

I have a Non-Disclosure Agreement (NDA), sub-award, contract, or another research-related document that I need to process – who do I need to contact?

- Contact your assigned [Research Administration Pod](#) to start the process. Any agreement or document that obligates, commits, or certifies the university requires institutional approval and the signature of an authorized representative.

I just received a request for Just-in-Time (JIT) – how do I start my response?

- Work with your assigned [Research Administration Pod](#) to prepare a response.

Who submits my funding proposal or JIT to the sponsor?

- The [Office of Sponsored Projects \(OSP\)](#) will review and approve each funding proposal and JIT response prior to submission. Pod staff will collaborate with the OSP pre-award team during the proposal development and submission process.

I need to obtain IRB approval for a study involving human subjects – what do I need to do?

- For help preparing an IRB protocol, contact the [Office of Human Research](#).

I need to obtain IACUC approval for a study involving animals – what do I need to do?

- For help preparing an IACUC protocol for review, contact the [Office of Research Safety](#).

Does GW have intramural grant funding opportunities?

- Yes, the Office of the Vice Provost for Research administers [intramural funding opportunities](#).

What resources are available for postdocs?

- [Resources for GW Postdoctoral Trainees](#)
- [GW Postdoc Association](#)

What resources are available for graduate student research?

- [Office of Graduate Student Assistantships and Fellowships](#)

What resources are available for undergraduate student research?

- Tips for [engaging undergraduate students in mentored research](#)
- [Resources for undergraduate students](#)
- [Center for Undergraduate Fellowships and Research](#)
- Students and trainees can search [GW Student Research Commons](#) for research opportunities across disciplines.



Research Mission

GW's mission is to improve the world with the discoveries and creative expressions of its faculty and students.

The university invests in scholarly and research areas where it can make the most significant impact, while fostering a robust research ecosystem that empowers scholars to achieve their aspirations.

Goals:

- ❖ Ensure that principal investigators have the support and flexibility they need to focus on their scholarship.
- ❖ Enhance GW's research and scholarly reputation and promote discoveries and innovations made by the university community.
- ❖ Align the research and academic enterprises.
- ❖ Enrich the educational experience of GW students by increasing opportunities to work and publish with faculty.

R1

GW has earned a Carnegie Classification signifying “very high research activity” among Higher Education Institutions.

AAU

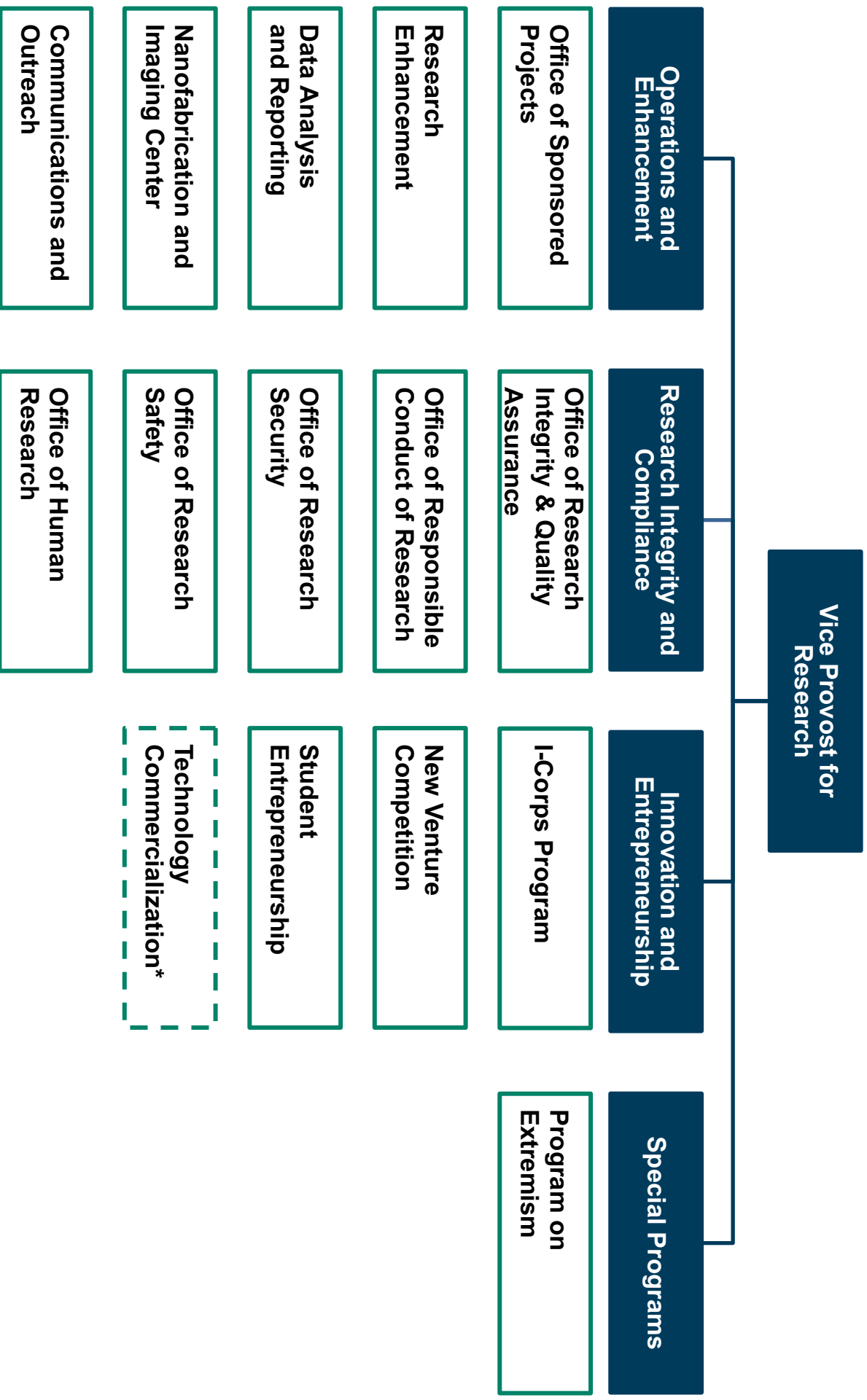
GW is a member of the prestigious Association of American Universities, an organization of 71 premier research universities transforming lives through education, research, and innovation.

Office of the Vice Provost for Research

<https://research.gwu.edu>

Research at the George Washington University

<https://www.gwu.edu/research>



*Reports to GW Faculty Affairs



Research Enhancement Unit

STRATEGIC ADVANCEMENT OF RESEARCH

The Research Enhancement Unit supports investigators at the George Washington University (GW) and GW's research enterprise by:

- identifying targeted opportunities to expand and diversify sources of research funding;
- providing individual consultative and scientific editing services to increase the competitiveness of research proposals;
- promoting and facilitating scientific collaboration for large, complex and multi-/cross-disciplinary proposals; and
- delivering a variety of professional development workshops, trainings and seminars.

Research Enhancement Services

FEDERAL PROPOSAL DEVELOPMENT SUPPORT

Experienced research development professionals assist faculty with:

- Conceptualizing the science of a proposal
- Team science strategies
- Developing strategic roadmaps for securing research funding across career phases
- Progressive sponsor-specific funding mechanisms
- Technical/scientific editing

Assisting PIs in building interdisciplinary proposal teams

Upon request, REU can convene internal mock review panels for internal peer review

FACULTY SUPPORT AND DEVELOPMENT

Workshops and Seminars

- Grant writing seminars
- Grantsmanship training
- Specialized faculty proposal and grant management “boot camps”
- Pre-award internal systems workshops

Collaboration and Diversification

- On-site presentations and workshops from sponsors to facilitate interaction with potential funders
- Coordinate campus visits with sponsors
- Build collaborations to broaden internal and external research exposure

Limited Proposal Opportunities

- Manage GW's selection and nomination process
- Disseminate limited submission opportunities to the research community
- Select and chair internal review and selection committees

Contact us

What is Pivot?

Pivot is a powerful tool that:

- Provides access to the most comprehensive global source of funding opportunities.
- Identifies researcher expertise from within or outside of your organization from millions of profiles.
- Enhances communication, monitoring, and tracking among individual faculty, teams, or researchers.

How do I use Pivot?

Set up a Pivot account – <http://pivot.proquest.com>

1. Click on the **Sign Up** link.
2. Complete the required fields including associating yourself with the George Washington University. Your email address and the password you entered during account creation will be your username and password.
3. Click the **Create my account** button and follow the 2-step verification process.

Claim an existing profile – <http://pivot.proquest.com>

1. In the upper right-hand corner, your name is displayed. If you see a **Claim profile** link, you currently do not have a profile linked to your COS Pivot account and we recommend you do so. Click the **Claim profile** link.
2. A list of potential profile matches (from within GW) may be displayed. If no matches occur, you can choose to look for potential matches outside of GW by clicking on the appropriate checkbox above the results list.
3. If you locate your profile from the results list, click the **This is me** button to the right of the profile name. If no results display, click the **Suggest a scholar** link located to the left of the results list to enter your information.
4. You do not need a profile to save searches or track funding opportunities.

Conduct funding searches – https://pivot.proquest.com/funding_main

1. Scroll down to **Keyword**, click the triangle and type in a relevant keyword. The search engine will auto-populate as you type. Indicate any more additional, relevant criteria and select **Search**, located at the bottom of the page.
2. To save a query, click **Save your query** at the top of the search results page.
3. Name your search. From here, you can indicate whether you want opportunities that fit your indicated criteria emailed to you on a weekly basis.

Additional funding search tools

1. Saved Searches – <http://pivot.proquest.com/alerts>

On the right side, click **Options** and you will see a group of actions:

- **Share** – Click this to share this funding search with a colleague or group of colleagues.
- **Edit** – Click this to edit the criteria for this funding search.
- **Add Tags** – Click this to label your searches easily. (This is not a requirement for saved funding searches.)
- **View Archived Results** – Click this to view funding opportunities from previous weeks.
- **Alert Email on/off** – Click this to edit email notifications.
- **Delete this search** – Click this to delete a particular funding search. **Note:** *There is no limit to the amount of funding searches you can save.*

2. Tracked Funding Opportunities – http://pivot.proquest.com/tracked_opps

If there is a specific funding opportunity for which you would like to receive updates, open the announcement and select **Track** or **Set to Active** on the right side of the screen. (Opportunities on your **Active List** are the important ones that will be mentioned on your Pivot homepage and opportunities on your **Tracked List** are non-urgent opportunities you are tracking.)

Where can I get help?

- Pivot's Youtube Channel: <https://www.youtube.com/user/ProQuestPivot>
- Webinars hosted by Pivot

Please email reshelp@gwu.edu if you need assistance with Pivot.



Office of Sponsored Projects

The Office of Sponsored Projects (OSP) delivers responsive, customer-centric services and management throughout all stages of sponsored projects administration, pre-award through post-award. OSP is responsible for institutional review and approval of extramural proposal submissions; receives, accepts, and administers awards; negotiates contracts, grants, cooperative agreements, and other sponsored agreements on behalf of the university; and provides central oversight and stewardship for sponsored projects administration at GW. OSP partners with the research administration pods to facilitate and promote externally funded research and scholarly pursuits of faculty and staff across all disciplines.

Pre-Award

- Proposal compliance review and submission
- Technical assistance with agency specific requirements and sponsor guidelines
- Resource and guidance for budget development
- Coordination and submission of Just-In-Time requests
- Authorized approval and signature for proposals seeking external funding

Award Management

- Review grant and cooperative agreements
- Oversight on award special terms and conditions
- Assist with interpretation of sponsor requirements, federal regulations, and GW policies
- Approve and manage non-financial post-award activities (i.e., NCE's, award transfers, prior approval requests)
- Review and submit non-financial reports

Contract Negotiation

- Draft, review and negotiate contracts with corporate partners and government agencies and complex agreements with foundations
- Develop and negotiate other research-related agreements (confidentiality agreements, teaming agreements, etc.)
- Liaison with other GW offices
- Review and interpret award terms and conditions at pre-award and award stages

Award Setup

- Account set-up in GW financial system for sponsored awards
- Account set-up for committed cost-share associated with externally sponsored funding
- Activation of administrative and at-risk accounts

Subaward Monitoring

- Work closely with PI and pod staff to initiate subaward agreements in a timely manner in compliance with terms of the prime award
- Draft and negotiate outgoing subaward agreements
- Provide subaward vs contractor determination
- Guidance to PI and pod staff on subaward terms and conditions and monitoring

Education & Training

- Onboarding and refresher training for research administrators (proposal development and award administration processes, financial management)
- Navigation of electronic systems
- Emerging compliance requirements
- Faculty awareness and preparedness program

Contact us

Phone: (202) 994-0728 **Web:** <https://sponsoredprojects.gwu.edu> **Email:** askovpr@gwu.edu

Research Administration Pods

GW utilizes a “pod” model for sponsored research administration. Each pod supports two or more schools and their affiliated research centers and institutes.

- Pods 1 & 2 manage the complete lifecycle of a sponsored research project and provide continuity from inception to award closeout.
- Pod 3 manages pre-award activities while school-based research administrators manage post-award activities.

Pod Portfolios

Pod 1

Schools/Units

- Columbian College of Arts and Sciences
- Elliott School of International Affairs
- School of Business
- Graduate School of Education and Human Development
- College of Professional Studies
- Libraries and Academic Innovation
- Non-school units

Pod Leader

Evangeline J. Downie,
Associate Dean for Research, Columbian College of Arts and Sciences

Pod Website

<http://blogs.gwu.edu/pod1>

Pod 2

Schools/Units

- Milken Institute School of Public Health
- Biostatistics Center
- GW Law

Pod Leader

Adnan A. Hyder,
Senior Associate Dean for Research, Milken Institute School of Public Health

Organizational Inbox

gwresearchpod2@gwu.edu

Pod Website

<http://blogs.gwu.edu/pod2>

Pod 3

Schools/Units

- School of Medicine and Health Sciences
- School of Engineering and Applied Science
- School of Nursing

Pod Leader

Robert H. Miller,
Vice Dean, School of Medicine and Health Sciences

Organizational Inbox

pod3research@gwu.edu

Pod Website

<https://blogs.gwu.edu/pod3>

Email askovpr@gwu.edu for additional guidance on pod assignments.

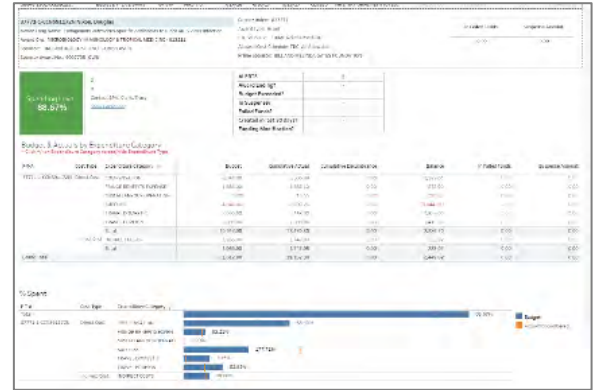


Principal Investigator (PI) Dashboard

What is PI Dashboard?

PI Dashboard is a secure, online tool used to:

- access an award's financial and personnel information at both summarized and detailed levels in a table format;
- easily view all your awards at once, extract data and run reports; and
- alert principal investigators to a critical award status.



Accessing PI Dashboard

Login Information

Access to PI Dashboard can be requested by emailing

pidash@gwu.edu and including the Full Name and GW UserID for those who need access. Access is secure and you may request access for yourself and those who assist in managing your awards.

PI Dashboard accessed at <https://sponsoredprojects.gwu.edu/pi-dashboard>. When prompted, use your UserID and password to gain access.

Features

Interactive Visualizations

Provides a graphic visualization of summary and detail information by categories.

- Ability to filter and drill down to award expenditures by expenditure category or type
- Ability to drill down into details on Budgets vs. Actuals and Encumbrances
- Ability to show percentage spending level.

Labor Effort*

- Percent of a person's labor distribution that is paid from an award.

Expenditures in Suspense*

- A list of expenditures that have been charged to a suspense account and have not been cleared.

Monthly Run Rate*

- Average monthly expenditure and projected expenditures.
- Estimate of when budget will run out.

* *These features are located in the "More Tools" tab of the Interactive Visualizations module.*

For more information

<https://sponsoredprojects.gwu.edu/pi-dashboard>

Contact us

pidash@gwu.edu



The Office of the Vice Provost for Research (OVPR) is committed to ensuring that GW's core research infrastructure is up-to-date and efficient in service of our vibrant and growing research community. To that end, OVPR and a cross-functional team of GW units implemented [myResearch](#), an enhanced electronic research administration (eRA) tool.

myResearch integrates proposal development and sponsored award management activities into one user-friendly system that delivers greater transparency and streamlined communication with better metrics and reporting. The system has established a solid foundation for ongoing improvements in support of the research enterprise.

Log in to myResearch

myResearch utilizes GW's single sign-on (SSO). The system can be accessed by visiting <https://myresearch.gwu.edu> and logging in with GW credentials.



[Support](#)



[Training](#)



[FAQs](#)



[Project Details](#)

Support

Teams are ready to assist investigators, research administrators, and partner offices with any aspect of the tool, including proposal and award management activities:

- Contact your assigned [research administration pod](#) for assistance with questions specific to your proposals and awards.
- Review the [myResearch training materials](#) available online.
- Attend a [training or Q&A session](#).
- Email myresearch@gwu.edu with questions regarding your myResearch access and role.
- Submit an [IT Help Desk Ticket](#). If you encounter a system error message and require technical support, please submit a ticket that mentions “myResearch” in the description of the problem. Your ticket will be prioritized and routed to the appropriate staff for resolution.



Research Integrity and Compliance

Partnering with GW's Scholarly Community

The George Washington University (GW) is committed to promoting the highest standards of ethical research and scholarly conduct while pursuing its research mission. Anyone at GW that is involved in conducting or supporting research shares the responsibility for achieving these goals.

The **Office of Research Integrity and Compliance (ORIC)** partners with members of the scholarly community to ensure that our programs comply with all federal, state, and local regulations and university policies.

Office of Human Research

- Responsible for the review of activities involving human volunteers and administrative support for GW's Institutional Review Boards (IRB).

Office of Research Safety

- Provides training, consultation, and services in the areas of biosafety, radiation safety, laser safety and animal welfare. ORS also provides administrative support to the Institutional Biosafety Committee (IBC), the Institutional Animal Care and Use Committee (IACUC), and is the primary contact for federal, state, and local regulatory agencies regarding matters of laboratory safety and animal welfare.

Office of Research Integrity and Compliance

- Provides guidance, assistance and training in the responsible conduct of research and works to support the scholarly community to insure all regulatory and sponsor requirements are met especially with regard to research security, export controls, conflicts of interest, research misconduct and data transfer/sharing

For more information on the services the Office of Research Integrity and Compliance provides, please refer to the detailed information in this section and visit the ORIC website: <https://researchintegrity.gwu.edu>



Office of Research Integrity & Compliance

Additionally, the university has compiled a number of helpful materials, resources and guidelines related to research integrity, including:

- **University Policies**, including research and related compliance policies:
<http://policy.gwu.edu>
- **Regulatory Compliance Help and Referral Line** offers a resource for anonymous reporting of concerns regarding suspected regulatory violations as well as links to other resources:
Report confidentially online: <https://compliance.gwu.edu/reporting>
Report to confidential phone hotline: 1-888-508-5275
- **Office of the Vice Provost for Research (OVPR) and Office of Sponsored Projects (OSP) websites**, provide an overview of resources and services dedicated to assisting the community with their scholarly activities, including OSP's Sponsored Projects Handbook as well as training programs and courses covering topics in research administration:
<http://research.gwu.edu/>
<http://sponsoredprojects.gwu.edu>

GW Human Research Protection Program (HRPP)

Office of Human Research (OHR) and Institutional Review Boards (IRB)

- OHR provides administrative oversight for the IRB, a committee charged with the oversight of human subjects research by federal regulations and institutional policies.
- The IRB is responsible for ensuring that the rights, welfare and safety of human subjects are protected.
- Members of the IRB have a variety of backgrounds, both affiliated and unaffiliated with GW.
- GW has two IRB committees that review studies; each panel meets once per month.
- IRB applications should be submitted via GW iRIS, the university's electronic research compliance system.

GW iRIS

Investigators can initiate and track the status of IRB applications via GW iRIS. The system automatically routes applications for approval and streamlines the review process.

<https://humanresearch.gwu.edu/forms-tools>

Cooperative Research

Your project may require multiple IRB reviews when another institution (its staff, students, employees, etc.) is engaged in the research. IRB agreements can be used in cooperative research, whenever possible, but are dependent on the institutions involved and cannot be used for exempt research. Please see the OHR website (<https://humanresearch.gwu.edu/irb-record>) for details.

Human Subjects Training Requirements and Opportunities

All research team members are required to complete Human Subjects Protection Training through the **Collaborative Institutional Training Initiative (CITI)** at www.citiprogram.org before the submission of an IRB application. All human subjects protection courses must be refreshed at least every 2 years. When registering, be sure to affiliate with GW and choose HUMAN SUBJECTS PROTECTION TRAINING, as the other options will not suffice for the GW IRB's requirements.

- Required Courses – Biomedical Investigators or Social Behavioral Research. *Note: for researchers not interacting with subjects but accessing identifiable data only, you may complete the Data and Specimens course in lieu of the Biomedical or Social Behavioral courses.*
- All researchers viewing and/or collecting Protected Health Information (PHI) MUST complete the HIPS or GW Skillport course.

OHR also offers educational training sessions to benefit the GW research community, such as a monthly IRB Forum, which presents different human subjects research topics. If you are interested in receiving announcements about training opportunities, please email ohrirb@gwu.edu and ask to be added to OHR's listserv.

In addition, OHR conducts classroom or departmental outreach sessions on all of GW's campuses. For a more personalized or study-specific outreach, individuals or small groups can schedule an appointment to discuss a proposed project with an OHR staff member by emailing ohrirb@gwu.edu.

PI Responsibilities

The principal investigator (PI) is the *individual* who assumes *full responsibility* for a research project, including student projects.

The PI bears the overall responsibility for the following:

- Scientific, fiscal and administrative responsibility for conducting the project
- Meeting all federal regulations as applicable to the research and the IRB requirements
- Ensuring the research is conducted ethically in accordance with the Belmont Report
- Ensuring that no subject is enrolled in research without obtaining informed consent
- Training and oversight of the study team, including doctoral students, research assistants, etc.
- Securing prior IRB review and approval for any nonexempt research, including any modifications to approved research
- Following any institutional policies and procedures
- Obtaining and documenting informed consent
- Ensuring prompt reporting of any unanticipated problems involving risks to subjects or others and any serious or continuing non-compliance
- Research record-keeping

PI Eligibility

The PI must be a full-time faculty member (i.e., assistant, associate, or full professor, research professor or research scientist). Students, residents, or fellows are typically not permitted to be PIs. One research team member (in addition to the PI) should be designated as the “principal contact” for communication with the IRB.

PI exceptions are granted on a case-by-case basis. Please view the PI Eligibility Exception Form page on the Office of Human Research website for details.

Contact Us

GW Office of Human Research (OHR)

ohrirb@gwu.edu

humanresearch.gwu.edu

202-994-2715

Office of Animal Research

The Office of Animal Research (OAR) is a core service group charged with supporting the humane care and responsible use of animals for research and teaching purposes within the George Washington University (GW) and to provide support to its researchers and their staff.

Through close cooperation with GW's Institutional Animal Care and Use Committee (IACUC), administration and researchers, our program has maintained continuous accreditation with the Association for Assessment and Accreditation of Laboratory Animal Care International (AAALACi) since 1974. In addition, we have an Assurance on file with NIH OLAW and are a registered research institution with USDA, respectively.

OAR provides GW researchers, their staff and their valuable animals with the highest standard of care and service in addition to assuring compliance with all university, local and federal regulations governing the humane care and use of laboratory animals.

Director & Attending Veterinarian, Office of Animal Research

Tia R. Bobo, DVM, MS, DACLAM
Office: 202-994-9288
Cell: 202-680-3760
tbobo@gwu.edu

Facility Manager, Office of Animal Research

Mayra J. Figueroa, LATG, ILAM
Office: 202-994-1468
Cell: 202-993-6257
mjfigueroa@gwu.edu

Senior Research Compliance Associate, IACUC

Phillip Sullivan, MLAS, LVT, VTS (LAM),
RLATG, CPIA
Office: 202-994-1476
iacuc@gwu.edu

Administrative Associate, Office of Animal Research

Marissa Gigantana-Collado
Office: 202-994-2871
mcollado@gwu.edu

OAR can provide the answers to these questions and more...

- What do I need in order to conduct animal research at GW?
- What is the process for importing or exporting animals?
- How do I gain access to my animals?
- How do I order animals, supplies, and drugs?
- What are the per diem rates and other fees for services?

Visit our website to learn more about our office and services:

<https://animalresearch.gwu.edu>



Office of Research Safety

The Office of Research Safety (ORS) oversees the university's **biological, radiation, and laser** safety programs ensuring that all laboratory research is conducted safely and in compliance with all federal and local regulations, guidelines, and best practices. Its goal is to minimize risks to all individuals working with or around hazardous materials and any risk posed to the environment.

In addition, ORS provides administrative support to the Institutional Biosafety Committee (IBC), the Institutional Animal Care and Use Committee (IACUC), and is the primary contact for federal, state, and local regulatory agencies regarding laboratory safety and animal welfare matters.

ORS collaborates closely with researchers, departments, divisions, Environmental Health & Safety, the Office of Animal Research, the Office of Human Research, the Office of Sponsored Projects, and the Export Controls Office.

ORS provides:

- Risk assessments
- SOP development
- Training
- Assistance with IBC & IACUC protocols and submissions
- Laboratory and animal facility inspections
- Exposure assessments
- Post approval monitoring of animal research protocols
- Incident investigations
- Administration of Biosafety Cabinet certifications
- Assistance with CDC and USDA permit applications
- MTA reviews
- Guidance in laboratory design

Lauren Hopkins, MPH
Interim Director, Biosafety Officer and IBC Administrator

202-994-8267
leh@gwu.edu

Idris Hooper
Senior Lab Biosafety Specialist

202-994-2812
ihooper@gwu.edu

Elizabeth Broussard
Sr. Research Compliance Associate
Institutional Animal Care and Use Committee (IACUC)

202-994-3450
iacuc@gwu.edu

2300 I Street, NW; Ross Hall, Suite B-05; Washington, DC 20037
labsafety@gwu.edu
<https://researchsafety.gwu.edu/>



Office of Research Integrity and Compliance

Responsible Conduct of Research

GW strives to create a research climate that promotes faithful adherence to high ethical standards in the conduct of research. GW Responsible Conduct of Research (RCR) programming challenges participants to engage in ethical decision-making by using realistic scenarios and current issues, involving participants in active learning, and using faculty and staff leaders who can provide relevant information for our research community. ORI establishes and provides administrative support for RCR education and ensures compliance with federal grant requirements.

Research Integrity

In furtherance of GW's Code of Conduct, we support university efforts in promoting the highest standards of ethical research and scholarly conduct while pursuing our research mission. This includes serving as a resource to faculty seeking guidance, support or training on any issues related to research integrity.

Policy, Regulatory Analysis and Support

We assist in developing and reviewing university policies related to research and in implementing applicable laws and regulations. Training is also offered to better enable the research community to be well-grounded in research ethics and requirements for conducting research in a manner that reflects well on the researcher, laboratory, department and/or institute, school and university.

Export Control

Export controls and sanctions can intersect with many scholarly activities, affecting sponsored research, travel, international collaborations, controlled technologies, visiting scholars, and more. Research Integrity and Compliance provides support in complying with these complex regulations, offering training, guidance, and direct engagement with research teams as needed.

Conflict of Interest

Our office administers and monitors compliance with the university's Conflict of Interest and Commitment for Faculty and Investigators Policy. The office supports researchers to disclose and manage any conflicts as required by federal and non-federal sponsors.

Data Use Agreements

Data Use Agreements (DUAs) are legally binding contracts between GW and another executing party that provide the terms for transferring data. Our office reviews and approves all DUAs. To begin the process, please complete the intake questions within the Agreements module in [myResearch](#).

For more information

<https://researchintegrity.gwu.edu>

Office of Innovation and Entrepreneurship

INNOVATION • EDUCATION • VENTURE CREATION • CONNECTION

Contact

innovate@gwu.edu

web: innovation.gwu.edu | newventurecompetition.gwu.edu

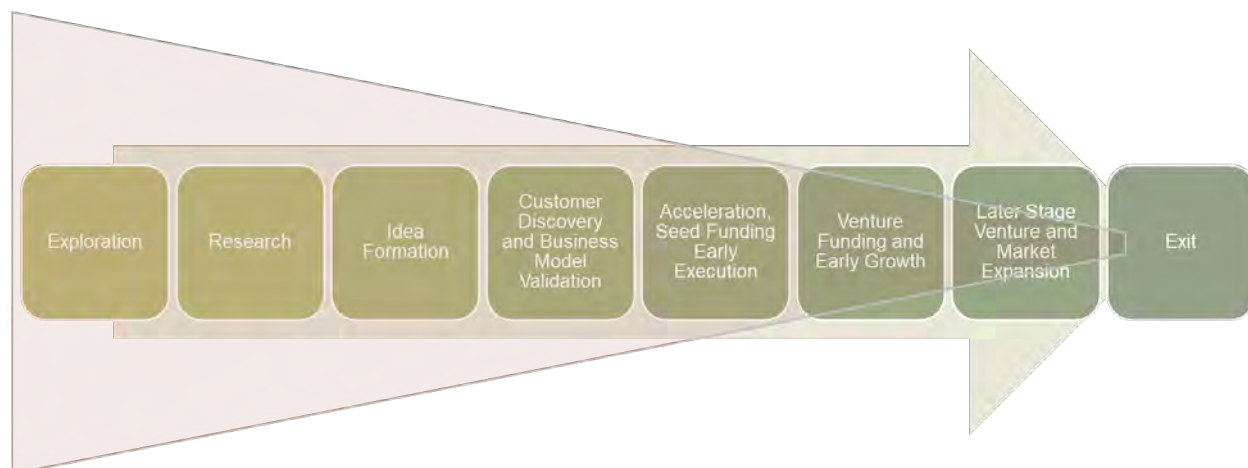
Instagram: @GWInnovate

LinkedIn: <https://www.linkedin.com/company/gw-office-of-innovation-and-entrepreneurship>

The **GW Office of Innovation & Entrepreneurship** (GWOIE) provides programming around innovation, research commercialization and venture creation, and helps facilitate connections to support GW faculty, student and alumni entrepreneurs. The office serves as a focal point for innovation for all schools at GW. OIE supports your interests in the teaching, research, and/or practice of innovation and entrepreneurship. [Sign up for a virtual introduction to our office.](#)

The Innovator's Journey

GWOIE supports faculty and researchers throughout the Innovator's Journey, as research findings and scholarship make their way into commercial use. GWOIE has resources available at all stages.



National Science Foundation I-Corps Hub: Mid-Atlantic Region

GW is a partner university in the NSF I-Corps Mid-Atlantic Hub, which includes universities in DC, Virginia, Maryland, Pennsylvania and North Carolina. The Hub provides Lean Innovation workshops, training courses, mentorship, grants, and support for strategizing and commercializing research. The purpose of I-Corps is to train researchers to think like entrepreneurs and the potential impact of their research and scholarship beyond the labs or classrooms. All interested faculty are invited to contact GWOIE or join our monthly [Intro to Lean Innovation workshops](#) to learn more.

Mentors-in-Residence Program

The primary goal of the [Mentors-in-Residence](#) (MIR) program is to engage GW students, faculty and staff with seasoned entrepreneurs and business executives. Through virtual office hours, mentors provide guidance, coaching, perspective, and connections to enhance entrepreneurship at GW.

Classroom Innovation Modules

GWOIE offers supplemental course curricula on innovation, problem-solving, customer discovery and the entrepreneurial mindset. These Classroom Modules integrate into any course by adding a new, team-oriented experiential exercise. OIE works with instructors to develop the right form, duration, and objective to best achieve course learning outcomes. The programs are completely turn-key, with OIE providing instructors, mentors, and materials, and are offered free as a service to professors at the university.

GW I+E Lab at 2000 Penn

The GW I+E Lab is a dedicated space where GW community members can work on their ventures. All students and faculty are welcome but must make an appointment due to building security. Please book Lab time at <https://innovation.gwu.edu>.

Penn West Equity and Innovation District

Penn West is a new initiative with the DC government and Golden Triangle Business Improvement District to develop a cluster of tech startups, entrepreneurs, incubators and associated businesses along Pennsylvania Avenue north of the GW Foggy Bottom campus that is committed to solutions for diversity, equity and inclusion. It will provide new opportunities for collaborative research and innovation for GW faculty and researchers with startups, larger tech companies, and investors.

The GW New Venture Competition (NVC)

The [GW New Venture Competition](#) (NVC) moves student ideas from ideation to implementation. Started in 2008, the NVC provides GW students, faculty, and alumni with real-world feedback and training in entrepreneurship that can't be replicated anywhere else. Students can compete in five tracks — Consumer Business Goods and Services, Business Goods and Services, Healthcare and Life Sciences, Social Venture, and the Explorer Track — and bring an idea to the table, work with mentors to craft and pitch a stellar idea and vie for cash and non-cash prizes. Teams with faculty participation historically tend to compete well. Some faculty have also used participation in the NVC as part of their course. Applications open in November and the competition runs from February - mid April). For more information, visit <https://newventurecompetition.gwu.edu>.

Technology Commercialization Office

The Journey from the Lab to the World Starts Here

email: tco@gwu.edu | web: commercialization.gwu.edu | [LinkedIn](#)

The **Technology Commercialization Office (TCO)** maximizes the economic and social benefit of researcher's innovations by commercializing university inventions, creating diverse partnerships, encouraging entrepreneurship and supporting a culture of innovation. TCO serves as a bridge between GW faculty and businesses, entrepreneurs and investors.

TCO's core team is augmented with a strong network of business and technical advisers and collaborates with **GW's Office of Innovation and Entrepreneurship (OIE)**. TCO's business- and service-focused approach has demonstrated success. With the strong and growing research base at GW, we expect technology commercialization to grow to the next level at GW.

Success Stories

- GW faculty member Lakhmir S. Chawla, MD developed a new therapeutic, GIAPREZA™, for people in septic or other distributive shock. Our commercial partner, La Jolla Pharmaceutical Company, brought GIAPREZA™ to market in 2017, just three years after licensing from GW.
- Erlotinib therapy can be an effective treatment for cancer patients, but can also cause a range of skin conditions. Professor William Weglicki led researchers testing aprepitant to counter the dermatological side effects of erlotinib. GW entered into license and sponsored research agreements in 2019 with Hoth Therapeutics. Clinical trials began in 2023 to establish safety and efficacy.

Funding Opportunities

- TCO's **Technology Maturation Awards of up to \$50,000 for up to 12 months** support proof-of-concept, prototyping, technology development and/or scale-up work for select inventions that have been disclosed to TCO. TMA applications are peer-reviewed by experienced entrepreneurs. Successful TMA projects generate the technology validation necessary to attract experienced licensees.

Events

- In spring of 2023, TCO launched the **GW Chapter of the National Academy of Inventors (NAI)** to honor and support the university's outstanding community of researchers, inventors, and entrepreneurs. The chapter is planning a variety of events through the upcoming year.
- The **Entrepreneur Bootcamp**, presented by Wilson Sonsini and TCO is a one-day event packed with up-to-date information and expert advice, covering all the critical topics for technology and medical startups to translate their groundbreaking ideas into successful, sustainable businesses.
- Since 2022, TCO has co-presented the **Pismo Ventures Lifescience Startup Symposium**. The symposium brings together an esteemed panel of experts, investors, and industry leaders, providing an exceptional platform for startups to present their groundbreaking ideas and potential.

It Starts with One Small Step

Contact us if you are a GW researcher and would like to discuss potential next steps for commercializing your innovation. We will ensure that your innovations have the greatest impact.

Library Support and Services

GW Libraries and Academic Innovation (LAI) provides many of the services and resources you need to be successful in your teaching, learning and research endeavors. Libraries that are part of LAI include the flagship [Estelle and Melvin Gelman Library](#) on the Foggy Bottom campus, [Eckles Library](#) on the Mount Vernon Campus, and the [Virginia Science and Technology Library](#) (VSTC Library) in Ashburn, VA.

GW also has specialized libraries with access and resources for specific schools. [Himmelfarb Health Sciences Library](#) is available to graduate students, and undergraduate majors, medical residents, faculty and staff of the GW Schools of Medicine and Health Sciences (SMHS), Milken Institute School of Public Health (GWSPH), and Nursing (SON). [The Jacob Burns Law Library](#) is available to GW Law faculty, students, alumni and staff of the GW Law School.

[View upcoming LAI workshops related to topics below and filter by topic](#)

Published Research Resources

Whether you are on campus, in the area, or across the globe, we are dedicated to providing you with the materials you need to continue your research and teaching. Gelman, the foggy bottom campus library, is open 24-hours during the academic year with browsable book stacks. Off-campus GW students and faculty [may request books or physical items](#) and have them delivered to their preferred address or held for contact-free pick up if a suitable digital option is not available.

On the [library website](#), you'll find access to hundreds of [databases](#) and thousands of [journals](#), e-books, data sets, and other materials. [Librarians are available](#) to help you get started or find the resources you need. [GW ScholarSpace](#) is GW's official repository for scholarly work. You can [deposit your own research](#) or search for past student, faculty, and institute research papers. Even many of GW's rare and unique resources are available virtually through [GW's Special Collections](#).

State-of-the-Art Research Tools

Modern research requires modern tools, and that toolkit is expanding all the time. Experts are available to provide introductory workshops, in-depth consultation on your established project, or advice on which tool to choose for a specific project.

Coding

Automate your data collection and cleaning with Python, use R to conduct hypothesis tests on categorical data, or build a website for your project using GitHub Pages. Librarian developers



can introduce you to the tools for programmatic data analysis, help debug your code, and recommend resources for learning more. [Make an appointment with a librarian developer.](#)

Copyright

Do you know when and how to request copyright permission? Do you need copyright permission for your own previously published work? Our compliance officer can answer your questions to avoid problems later. [Make an appointment with the compliance officer.](#)

Data Management

Librarians can help you find data sets, organize the data you collect, and prepare your data for long-term storage and sharing. [Make an appointment with a data librarian.](#)

Visualizing Data with Maps

Gather, manage, and analyze your data using Geographic Information Systems (GIS) to gain deeper insights into patterns and relationships. [Make an appointment with a GIS specialist.](#)

Multimedia and Digital Storytelling

Communicate your research using videos, podcasts, research posters and much more. The [CREATE digital studio](#) can support you with equipment to check out, and AV production studio, classroom instruction on various tools, and personalized assistance. [Make an appointment with a multimedia specialist.](#)

ORCID

Distinguish yourself as a researcher and permanently connect your names(s) with your work throughout your research career. Librarians can help you set up, update, or connect your [ORCID](#) ID (Open Researcher and Contributor ID) with other systems such as SciENcv. [Make an appointment with a librarian.](#)

Publishing

Learn more about understanding your publishing agreement and how to protect [your rights as an author](#). Our compliance officer can answer your questions to make sure you don't sign away the rights to your hard work. [Make an appointment to discuss your author rights.](#)

Special Collections

Learn more about GW by perusing [GW Past](#), expand your knowledge of US labor history by exploring the [Teamsters archives](#), and delve into the full breadth of our collection of rare, unique, and archival resources in the [Special Collections Research Center](#). Make an appointment with a [Special Collections librarian](#).

Statistical Consulting

Get personalized help with statistical analyses in Python, R, SAS, SPSS, SQL, STATA, and Tableau. [Make an appointment with a statistical consultant.](#)

Research Technology Services (RTS)

Providing research computing services to the GW Community to enhance GW's research faculty competitiveness and success.

<https://it.gwu.edu/research-technology-services>

Service Offerings

Service	Key components
Data Services / Data Management	Data Hosting, High-performance transfers, Databases (AWS RedShift, Panoply)
Network	CAAREN, Internet2, Global Research Networks, High Speed Data Transfer
Cloud	AWS, Google Cloud Platform (GCP), Azure, Oracle Cloud, RONIN, NIH STRIDES
Identity	Affiliates, Federated, Certificates, Account Provisioning
Storage	BOX, StrongBox, Pegasus, Armor, Research NAS (Qumulo)
Applications	REDCap, MDAP, Galaxy, Globus
Machine Learning	AWS Sagemaker, Google AI platform
System Administration and Support	Linux & Windows Workstations
HPC and Big Data	Pegasus, HTCondor / OpenScience Grid (OSG)
Technology Consulting	Cloud environments, Architectures, Program Debugging, Solutions Development
Computational and Analytics Support	Build and Support Analytical Efforts, Tool Selection,
Training	LAI Carpentry workshops, AWS and Google Training Programs
Data Management Plans, Security Reviews	Reviews and guidance for compliance
Cyberinfrastructure and Cloud Engineering	Protected Data Environments, Custom Configurations, General Support
Security Services / Cybersecurity	Endpoint, Network, Applications, and Infrastructure Security, Data Encryption, Cryptology, Incident Response, Vulnerability Management and Disaster Recovery

HPC Cluster and High-Performance Research Network

Resource	Go here for...
HPC Cluster – Main (Pegasus)	General information, request access to the Cluster, read HPC Cluster documentation, the environment and status
HPC Help: Inquiries and Support e-mail hpchelp@gwu.edu	Problem resolution, request access, troubleshoot program code, Cluster performance issues, general assistance
CARREN (Capital Area Advanced Research Network)	General information on CAAREN, support assistance, specifications, projects in CAAREN and affiliated organizations

RTS Information

Resource	Go here for...
Request RTS Service (intake request)	Request existing service, data transfer, account provisioning, storage, workstation, etc., request assistance with grant proposals
RTS Inquiries and Consulting e-mail rtshelp@tickets.arc.gwu.edu	Initial contact, establish a new relationship, consulting assistance, develop custom engineered solutions with estimated cost, guaranteed response within 24 – 36 hours

Contacts

Name/Title	Email/Phone	Contact for...
Clark Gaylord, Director, Research Technology Services (RTS)	cgaylord@gwu.edu 571.553.0070	General inquiries, vision, strategy, relationship building, prioritization, problem escalation and funding
Rubeel Iqbal, Manager, Research Technology Services (RTS)	riqbal@gwu.edu 571.345.8521	General inquiries, oversee HPC systems, diagnose hardware & software problems, problem escalation, manage team
Theo Bosnak, Digital Transformation Specialist	tbosnak@gwu.edu 703.625.9041	Faculty researcher liaison, publication acknowledgements, services development, communication and ORCID

Communicating GW Research

Communicating broadly about your research and original scholarship boosts the impact and reach of your work while also enhancing the reputation of your school and the university. Promoting your research makes it easier for others to find and cite your work, to reach potential funders or collaborators, and to inform the public debate.

GW's Office of Communications and Marketing helps GW scholars share their discoveries and work with various audiences through news coverage, university web stories, videos, Op-Eds, graphics or illustration support, engagement with policymakers, events, and more.

There is no one-size-fits-all approach to promoting your research. Depending on your news or needs, we will assess it together and determine how best to support you. The main recommendation is to reach out early. Strategic communications planning is most effective with advanced notice.

Reach out Early

Strategic communications planning is most effective with advanced notice. Reach out to the GW Research Communications team as soon as you submit a manuscript for publication, accept an invitation to speak at a broadly publicized event, or just to give a heads up about something that could be coming down the road.

To start the process, email Kathleen Garrigan, director of research communications, at kgarrigan@gwu.edu. In your message, provide as many details about your news and/or needs as possible, including a summary or draft of any publication. We will likely set up an initial consultation with you to learn more, and then assemble a team of communications specialists to coordinate next steps.

Media Training & Interview Preparation

The Office of Media Relations assists GW researchers and scholars in sharing their expertise with the world. Support may include strategic media plan development, press material development and distribution, media training and interview preparation, interview scheduling and logistical support.

- [Guidance on interacting with the press](#)

Learn more about GW Media Relations by visiting mediarelations.gwu.edu. To speak with a media relations specialist, email gwmedia@gwu.edu.

Op-Eds and Writing for Non-Academic Audiences

Through your research and expertise, you have the potential to impact the conversation around important issues of the day. One effective way of doing that is through Op-Eds and other first-person commentaries that reach diverse audiences within and beyond the academic community. Sharing your knowledge through an Op-Ed is often a great way to both draw attention to your research and work while also informing on issues important to policymakers, industry leaders, other academic researchers and the broader public.

If you'd like to explore the idea of writing an Op-Ed, GW Communications and Marketing can work with you to think through your key messages, call to action, target audience(s) and possible outlets, as well as support you throughout the Op-Ed journey. To start the process, contact Kathleen Garrigan at kgarrigan@gwu.edu.

Research Illustrations

Images and graphics can enhance an audience's understanding of information, attract attention on a page, and can serve as artwork for magazines, journals, news outlets, and funding proposals. The Office of the Vice Provost for Research (OVPR) and the Office of Communications and Marketing support the creation of illustrations based on specific criteria.

- [Read more and submit a request](#)

Research Presentation Template

A PowerPoint template has been created that provides a high-level overview of GW's research enterprise. It highlights our growth as a global research institution, some of our world-class research facilities located in the heart of Washington, D.C., the breadth and diversity of our research programs, our innovation impact, and how we facilitate and celebrate student research. The GW community is invited to download the slide deck and adapt it as appropriate for their needs.

- [Download the PowerPoint Template](#)

GW Student Research Commons

A one-stop resource for student research opportunities at GW and beyond
researchcommons.gwu.edu

**Paid Research
Positions**



**Research
Internships**



Fellowships



**Funding
Opportunities**



**Research
Events**



Include Students and Trainees in Your Research ▼

GW students have made important contributions to research projects by collecting data, assisting in writing grant proposals and even co-authoring articles. Faculty expand the capabilities of their research programs when they provide well-structured opportunities for undergraduates to participate.

Post Your Research Internship on GW Student Research Commons ▼

Faculty can post for-credit and other experiential opportunities on GW Student Research Commons:

- Reach a broad audience of GW students beyond your classroom
- Easy to post, with built-in workflows
- Receive applications directly or customize the online application template



Additional guidance for posting research internships is available at go.gwu.edu/mentoredresearch

► Send us your feedback at researchcommons@gwu.edu

Partners

- Center for Undergraduate Fellowships and Research
- Office of the Vice Provost for Research
- Office of the Provost
- GW Libraries and Academic Innovation
- University Career Services
- Office for Student Success

**THE GEORGE
WASHINGTON
UNIVERSITY**

WASHINGTON, DC